

PINS 1 & 2 CRIMPED

**Material and Finish**

Body: PBT Thermoplastic  
 UL94V-0, Color: Black  
 Center Pin: Copper Alloy, Nickel Plated  
 Contact #1: Brass, Tin Plated  
 Contact #2: Phosphor Bronze, Tin Plated  
 Contact #3: Brass, Tin Plated

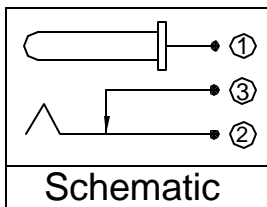
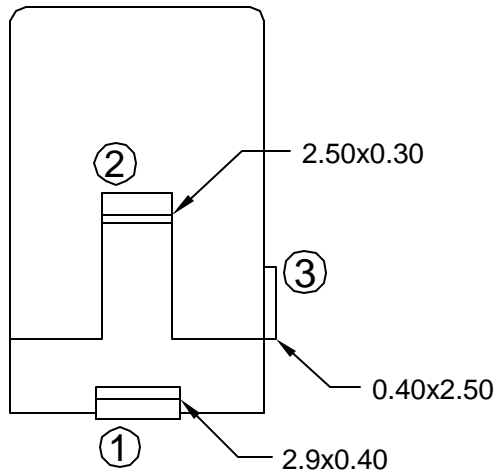
**Electrical Characteristics**

Contact Resistance  
 Before Test  
 Between Terminals: 30 milliohms Max.  
 Plug to Contacts: 50 milliohms Max.  
 After Test:  
 Between Terminals: 60 milliohms Max.  
 Plug to Contacts: 100 milliohms Max.

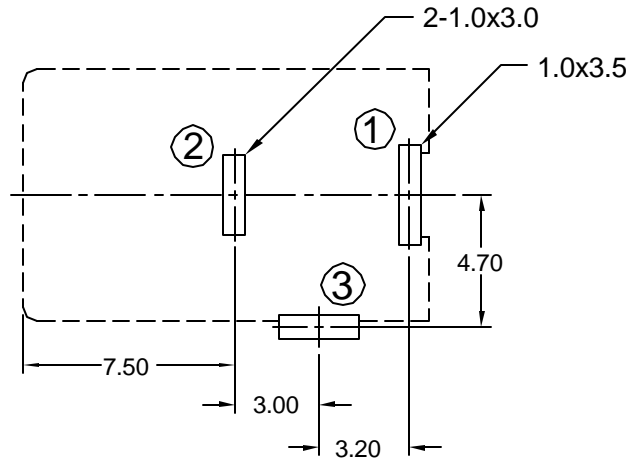
Rated Voltage: 24V DC  
 Rated Current: 3.5A  
 5A at 20V Max.  
 Insulation Resistance: 100 Megohms Min.  
 at 500V DC

**Mechanical Characteristics**

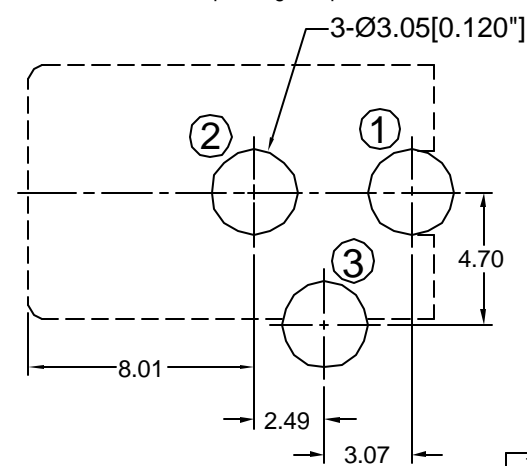
Durability Test: 5000 cycles  
 Insertion Force: 0.3kg-2.0kg  
 Extraction Force: 0.3kg-2.0kg  
 Operating Temp: -25°C to +85°C



Schematic



Recommended PCB Layout (Top View)



Alternate PCB Layout (Top View)

Tolerances

X.X ± 0.25  
 X.XX ± 0.15  
 Unless Stated  
 Otherwise



REV.	DATE	DESCRIPTION	REV. BY	CHK. BY	DRAWN BY	DATE
B1	3/15/02	Ref. ECO 02-036	K. Wallace	K. Wallace	J. Kring	10/18/94
B2	3/26/02	Ref. ECO 01-214	C. Leiva	C. Leiva		
B3	5/9/02	Corrections to ECO 02-036	K. Wallace	K. Wallace		
B4	4/9/03	ECO #02-128	C. Leiva	T. Gokcek	UNITS	mm
B5	9/30/04	ECO #04-053	H. MA	C. Leiva		
C1	01/31/06	ECO #05-069	R. Aquirre	H. MA		

KLD-0202-AC, KLD-0202-BC

DC Power Jack, Thru Hole  
 2.0 and 2.5mm Center Pins

